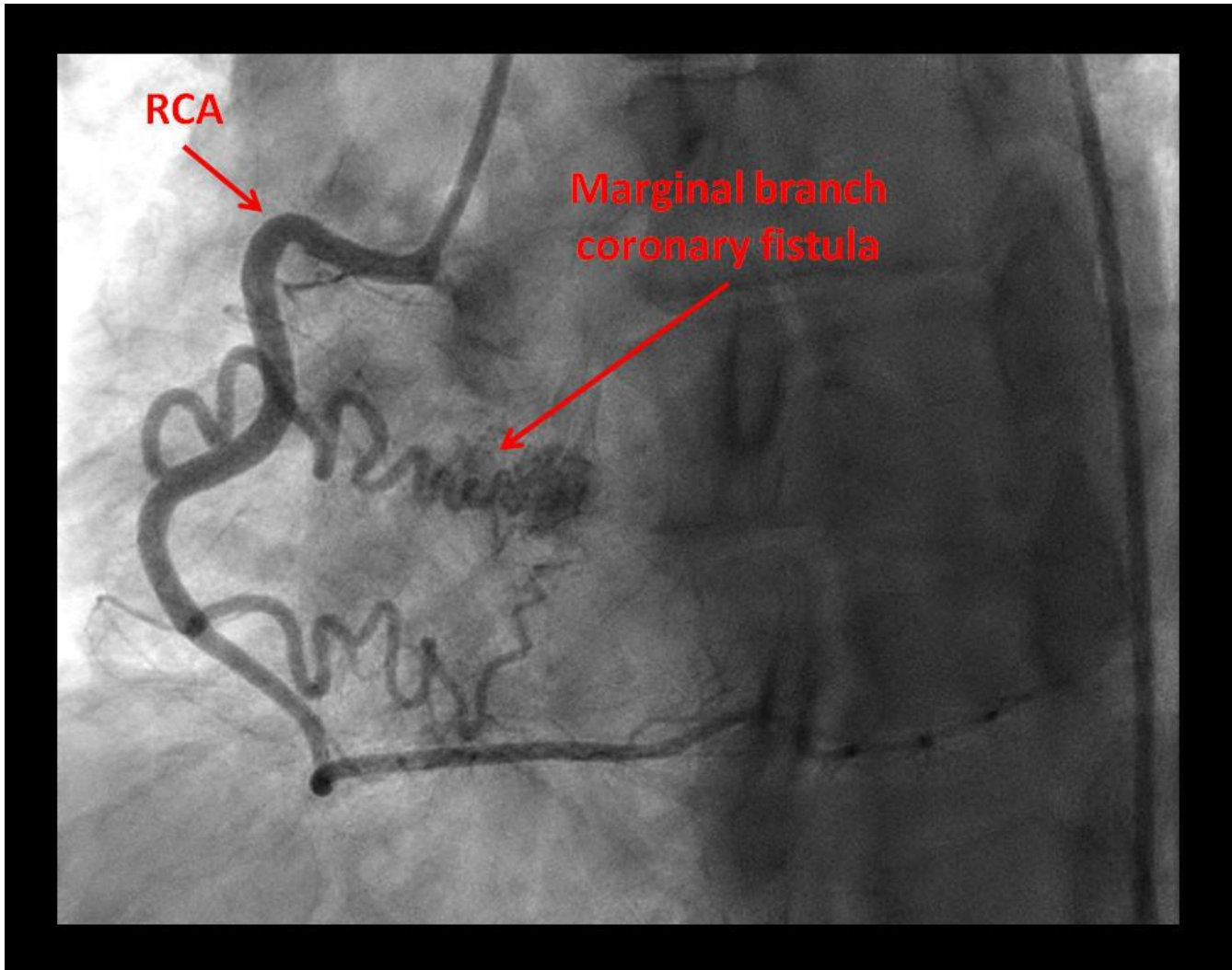


**Coronary Fistula: *The Anomalous Tributary!***

Sarina Sachdev, M.D.<sup>a,b</sup>, Hassan Tahir, M.D.<sup>a</sup>, Landai Nguyen, D.O.<sup>a</sup>,  
G. Mustafa Awan, M.D.<sup>a</sup>, Bassam Omar, M.D., Ph.D.<sup>a</sup>

**Description**

**C**oronary artery fistulae have been described draining coronary artery flow into another vascular structure or cardiac cavity [1]. These are mostly congenital [2], with infrequent cases of iatrogenic coronary fistulae reported [3]. Various management options have been proposed based on size and physiology of the fistula, complications and symptoms [4].

---

Manuscript submitted February 5, 2019, accepted February 7, 2019

a Division of Cardiology, University of South Alabama, Mobile, AL, USA

b Corresponding Author: Sarina Sachdev, Division of Cardiology, University of South Alabama, 2451 USA Medical Center Dr., Mobile, AL 36617, USA.

Email: [ssachdev@health.southalabama.edu](mailto:ssachdev@health.southalabama.edu)

<http://cardiofellows.com/newsletter-february-2019.html>

---

**References**

1. Raju MG, Goyal SK, Punnam SR, Shah DO, Smith GF, Abela GS. Coronary artery fistula: a case series with review of the literature. *J Cardiol*. 2009 Jun;53(3):467-72.
  2. Tkebuchava T, Von Segesser LK, Vogt PR, Jenni R, Arbenz U, Turina M. Congenital coronary fistulas in children and adults: diagnosis, surgical technique and results. *J Cardiovasc Surg (Torino)*. 1996 Feb;37(1):29-34.
  3. Banerjee S, Patra S. Coronary-Cameral Fistula Caused by Guidewire Trauma and Resolved by Coil Embolization. *Tex Heart Inst J*. 2016 Aug 1;43(4):338-40.
  4. Ata Y, Turk T, Bicer M, Yalcin M, Ata F, Yavuz S. Coronary arteriovenous fistulas in the adults: natural history and management strategies. *J Cardiothorac Surg*. 2009 Nov 6;4:62.
- 

**KEYWORDS:** Coronary Artery Disease; Fistula; Coronary Vessel Anomalies.

Reference this article as:

Sachdev S, Tahir H, Nguyen L, Awan GM, Omar B. Coronary Fistula: *The Anomalous Tributary!* Cardiofel Newslet 2019 Feb; 2(2): 5-6.