

CORONARY ANGIOGRAPHY

Basic Views

Sarina Sachdev, M.D.^{a, b}, Bassam Omar, M.D.^a, Ph.D., G. Mustafa Awan, M.D.^a, George Eyrich, M.D.^a

Introduction

Coronary arteriography remains the gold standard for identifying the presence and/or severity of atherosclerotic coronary artery disease, aiding decision-making with regards to appropriateness of coronary interventions [1]. It involves the selective injection of a radiopaque contrast agent directly into a coronary artery.

Coronary angiography has undergone major transformation ever since its inception by Dr. F. Mason Sones Jr. in 1959 [2]. Currently there are a variety of approaches utilizing multiple safer catheters and more convenient access sites, such as the radial approach, allowing earlier recovery and discharge with a lower incidence of vascular complications.

Patient evaluation with regards to suitability of cardiac catheterization, in addition to the skill and knowledge of the basic techniques of vascular access, catheter advancement and coronary engagement remain the cornerstone for the performance of a safe coronary angiogram [3]. These are beyond the scope of this review; we will concentrate on interpretation of the basic angiographic views.

References:

1. Di Mario C, Sutaria N. Coronary angiography in the angioplasty era: projections with a meaning. *Heart*. 2005 Jul;91(7):968-76.
2. Loop FD. Classics in thoracic surgery. F. Mason Sones, Jr., (1918-1985). *Ann Thorac Surg*. 1987 Feb;43(2):237-8.
3. Kosova E, Ricciardi M. Cardiac Catheterization. *JAMA*. 2017 Jun 13;317(22):2344.

Manuscript submitted November 06, 2018, accepted November 22, 2018.

a Division of Cardiology, University of South Alabama, Mobile, AL, USA

b Corresponding Author: Sarina Sachdev, Division of Cardiology, University of South Alabama, 2451 USA Medical Center Dr., Mobile, AL 36617, USA.

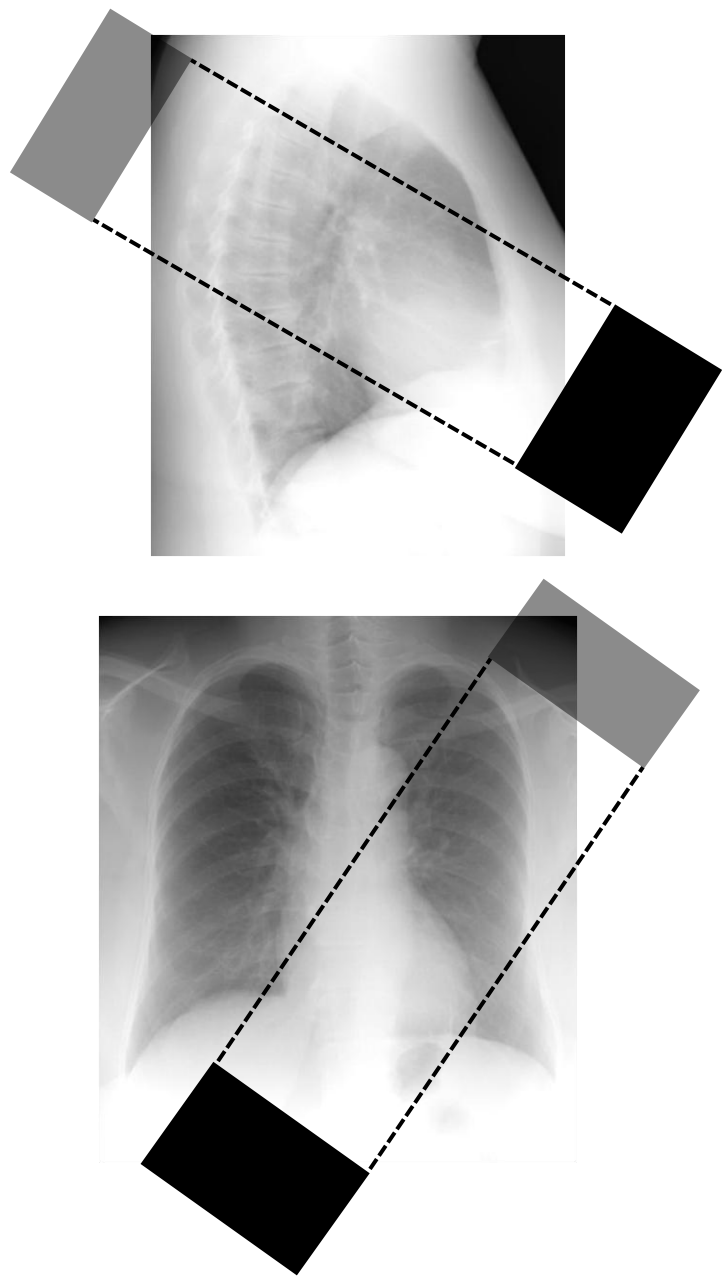
Email: ssachdev@health.southalabama.edu

<https://cardiofellows.com/newsletter-november-2018.html>

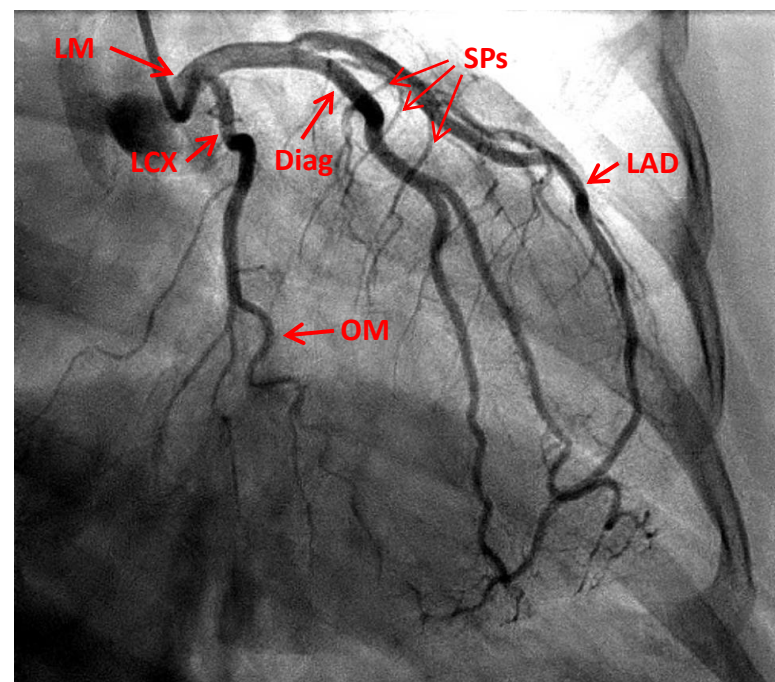
KEYWORDS: Cardiac Catheterization; Coronary Angiography; Education

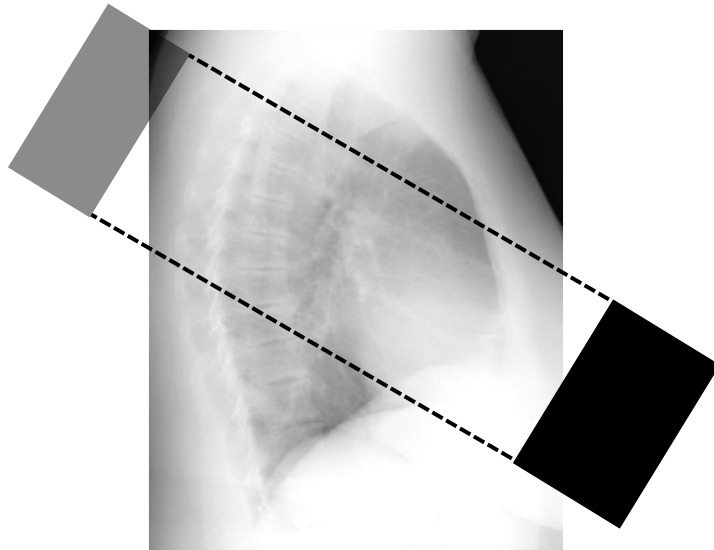
Reference this article as:

Sachdev S, Omar B, Awan GM, Eyrich G. Coronary Angiography: Basic Views. *Cardiofel Newslet* 2018 November;1(5):27–38.

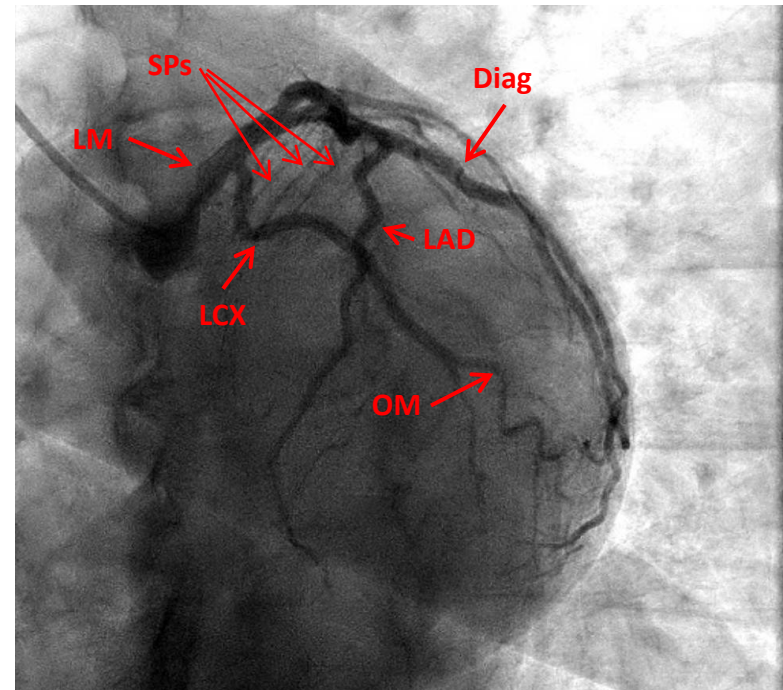
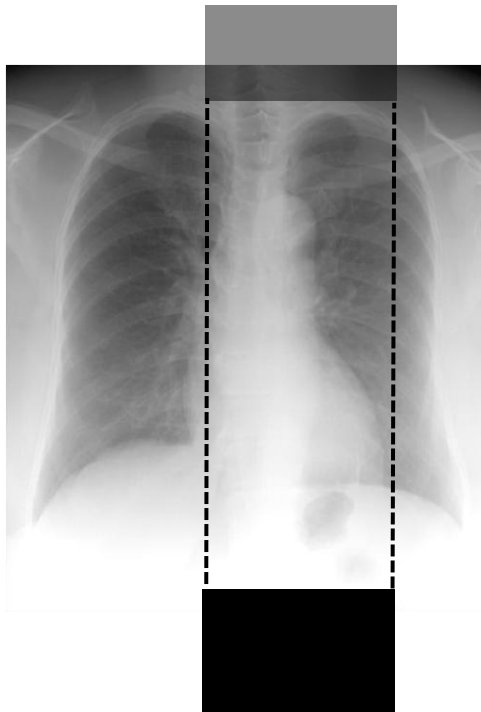


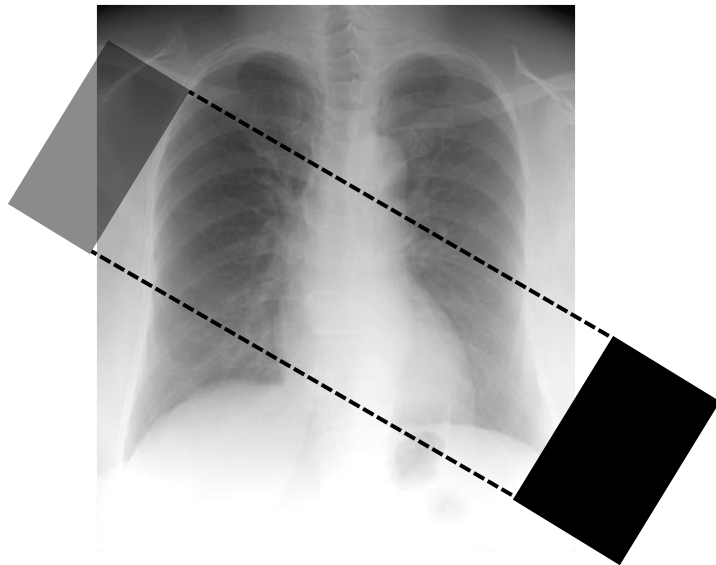
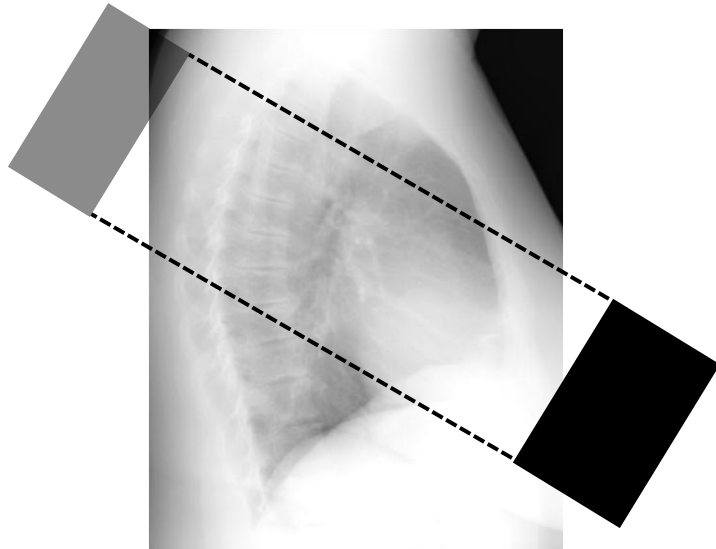
LCA: RAO Caudal



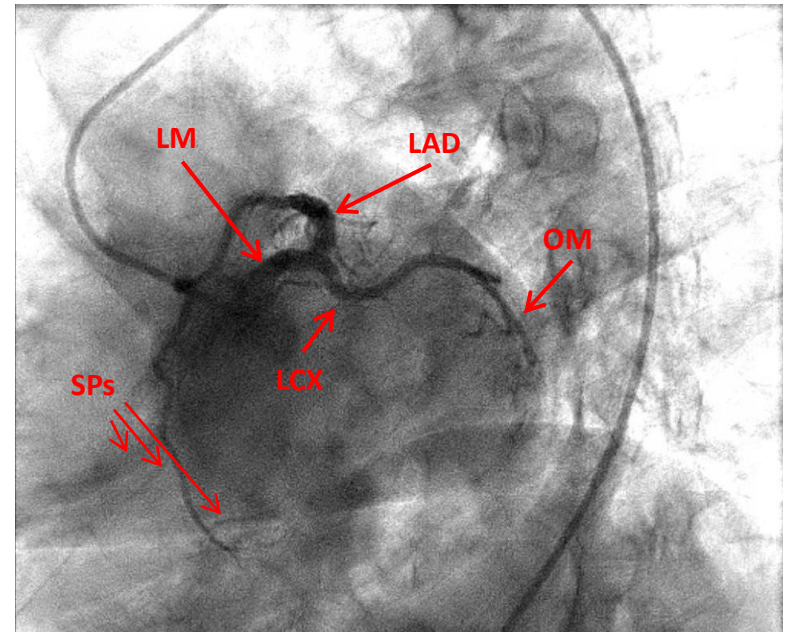


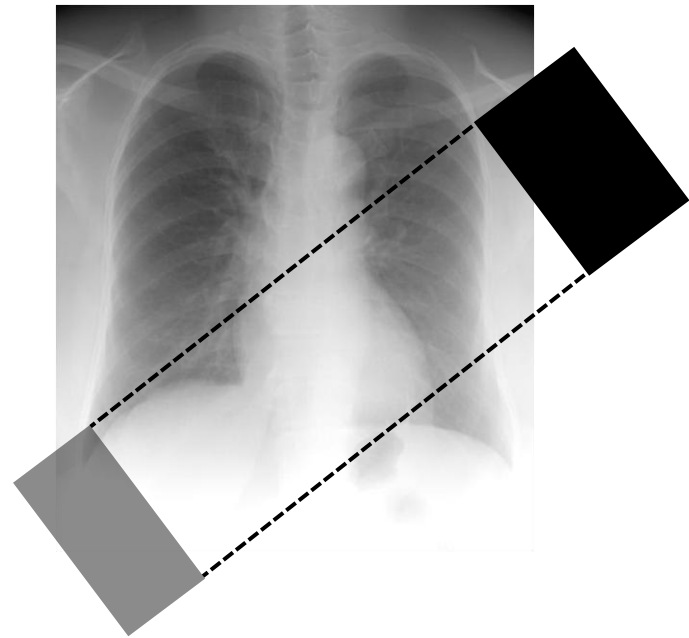
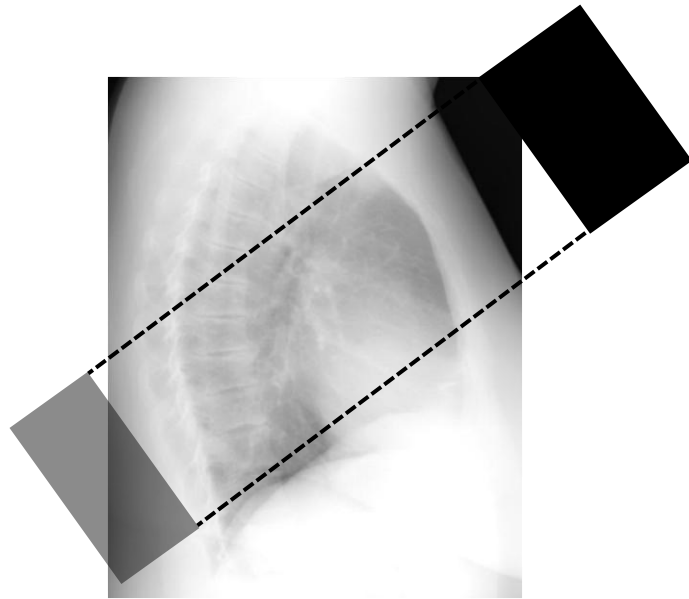
LCA: AP Caudal



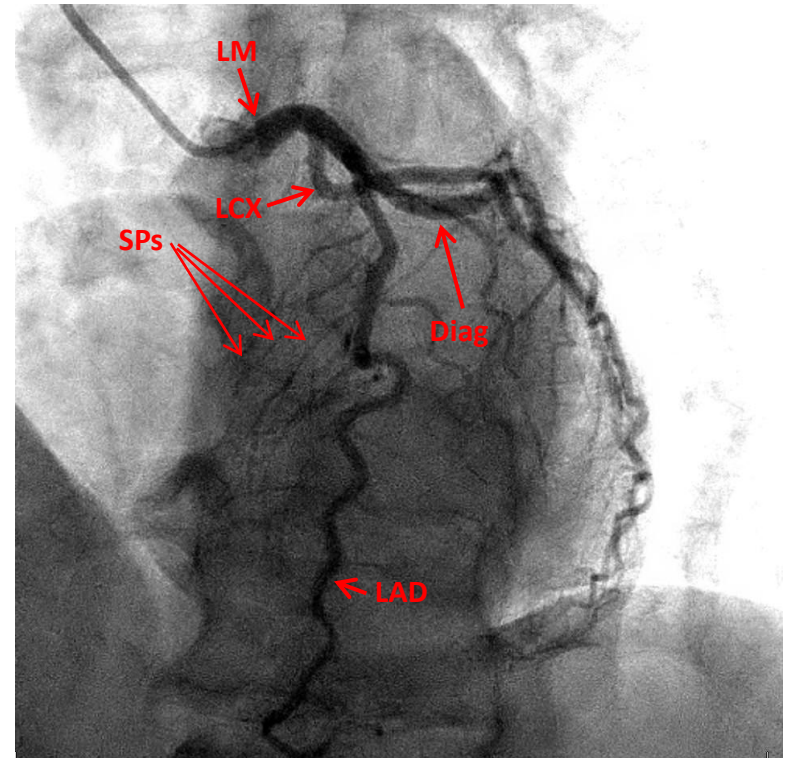


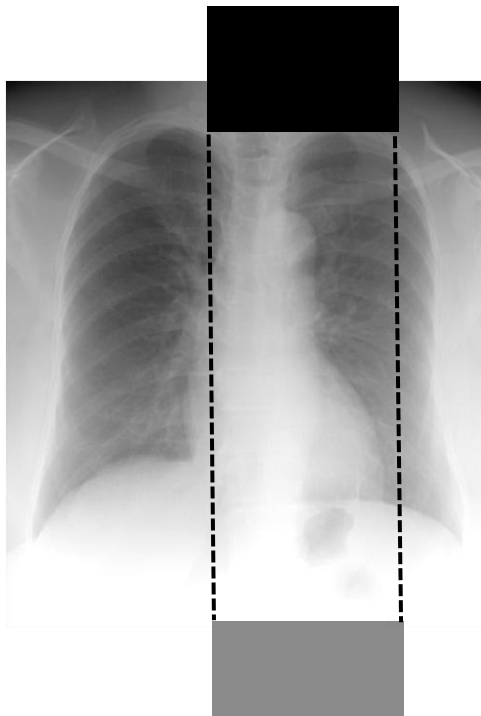
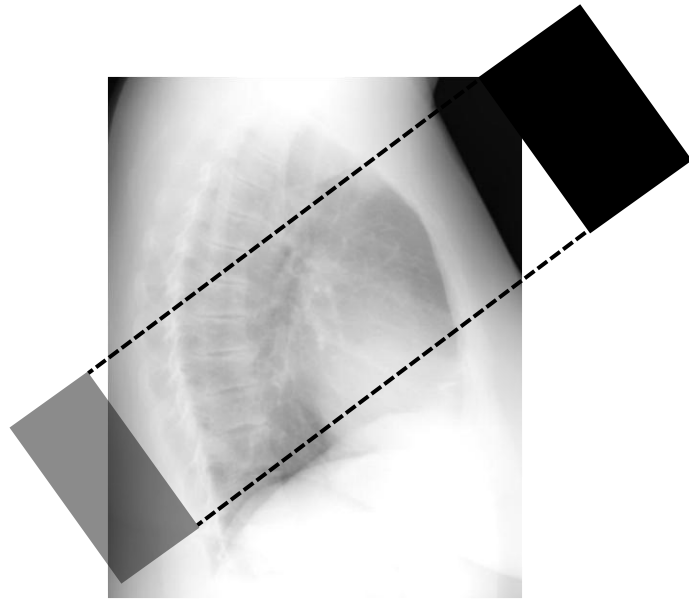
LCA: LAO Caudal



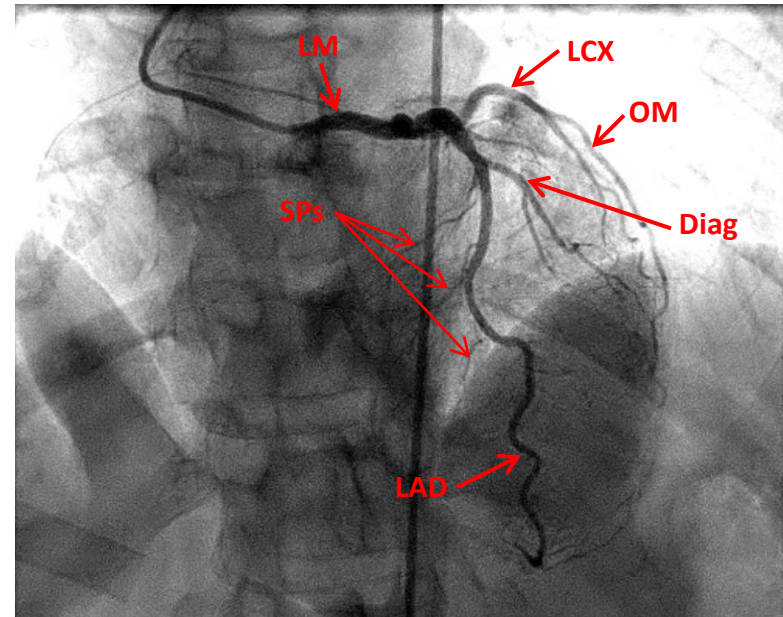


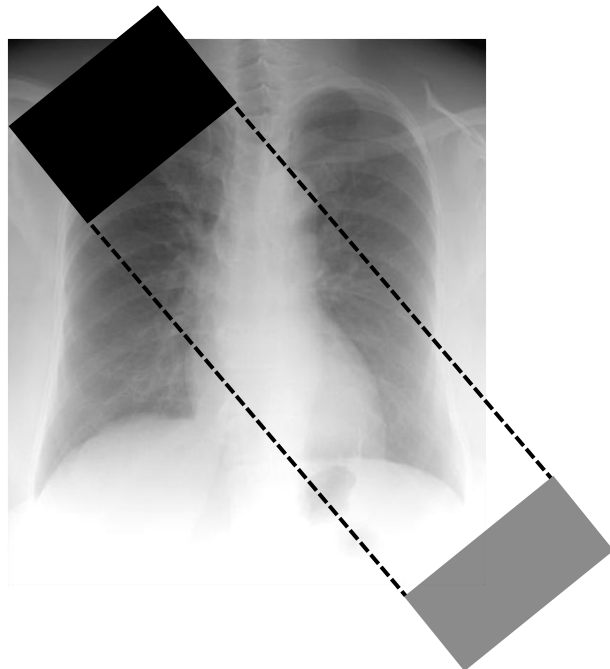
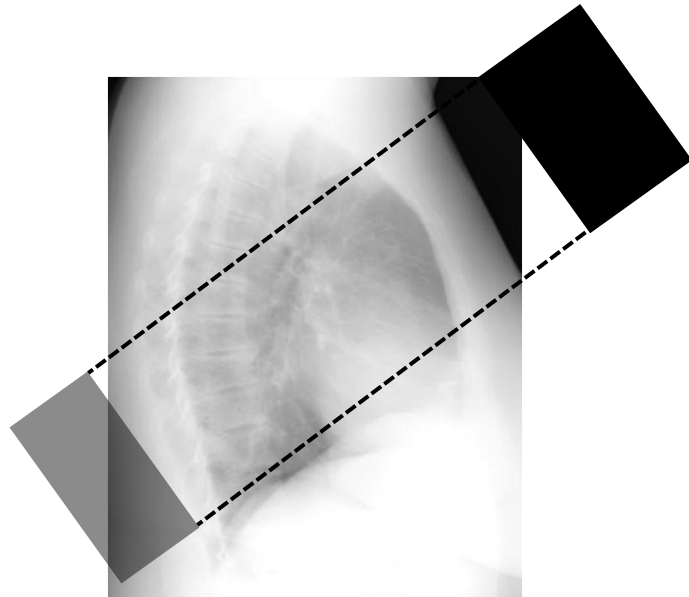
LCA: LAO Cranial



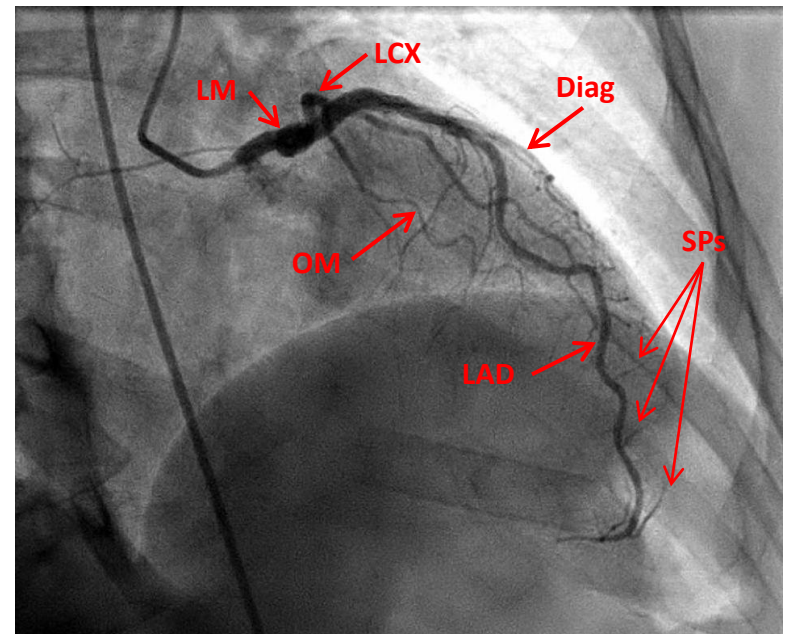


LCA: AP Cranial

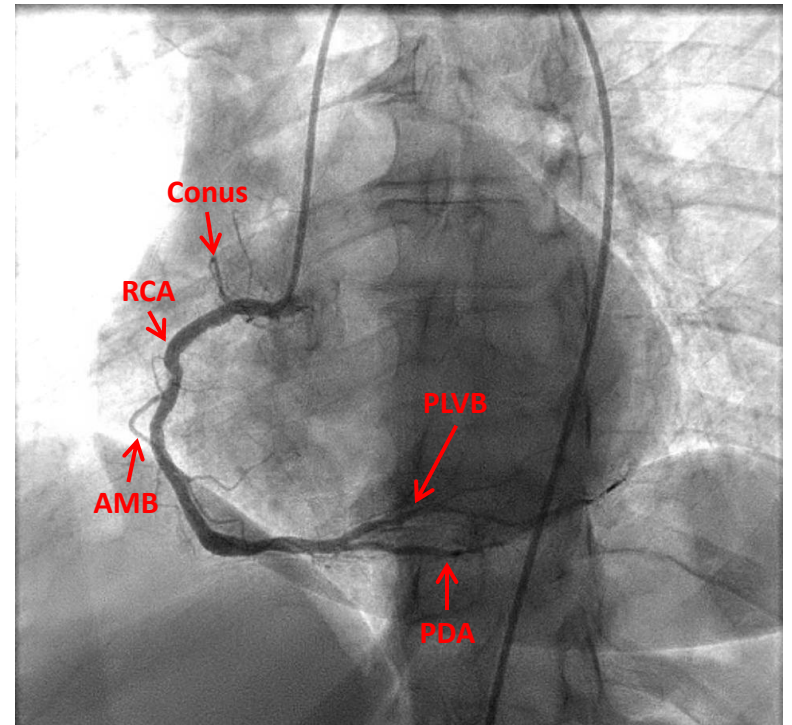
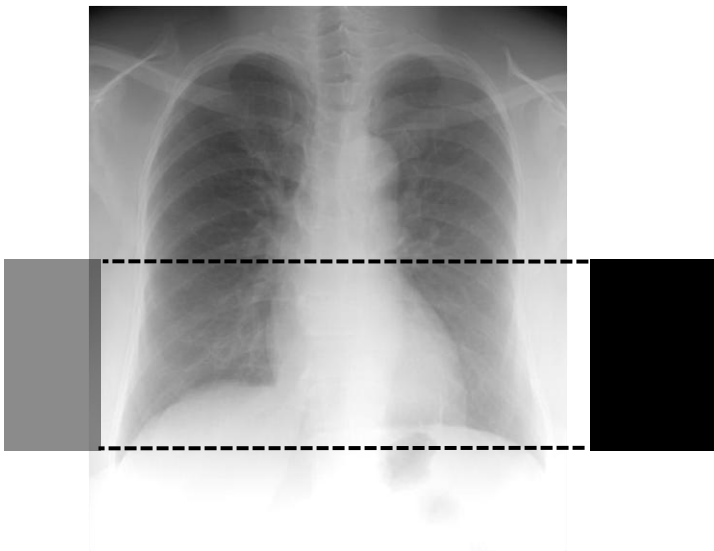
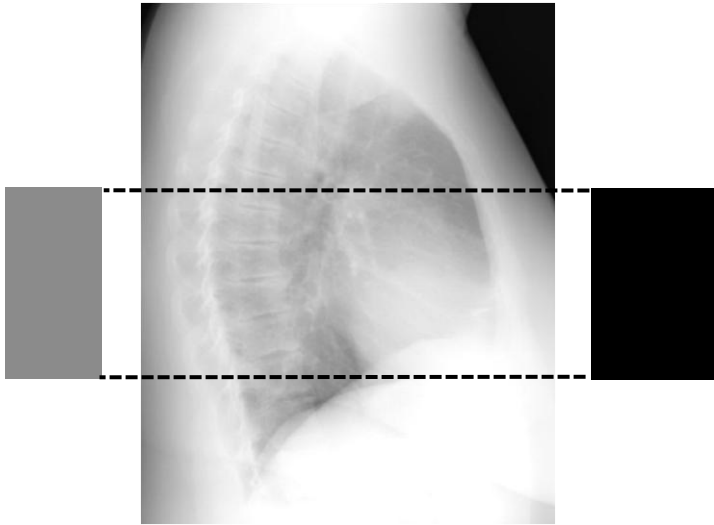


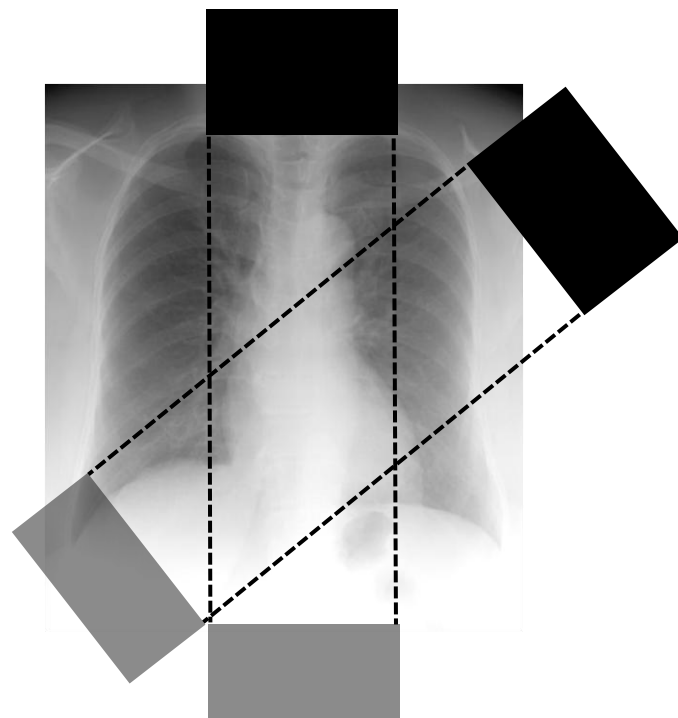
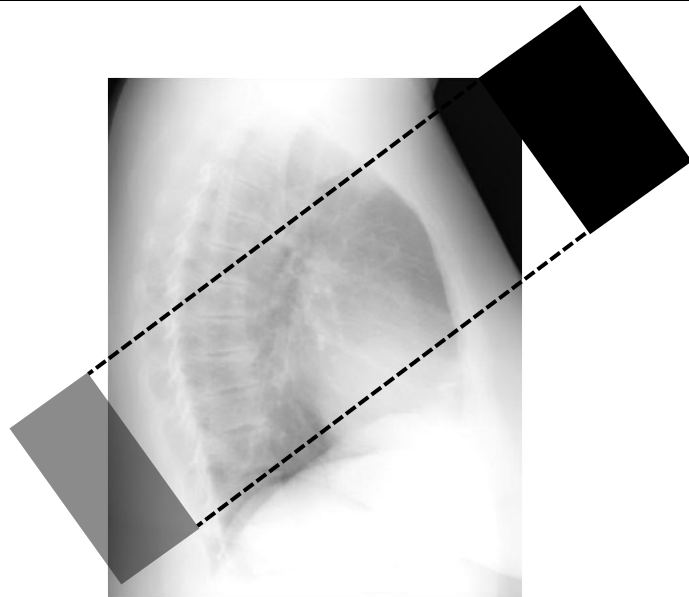


LCA: RAO Cranial

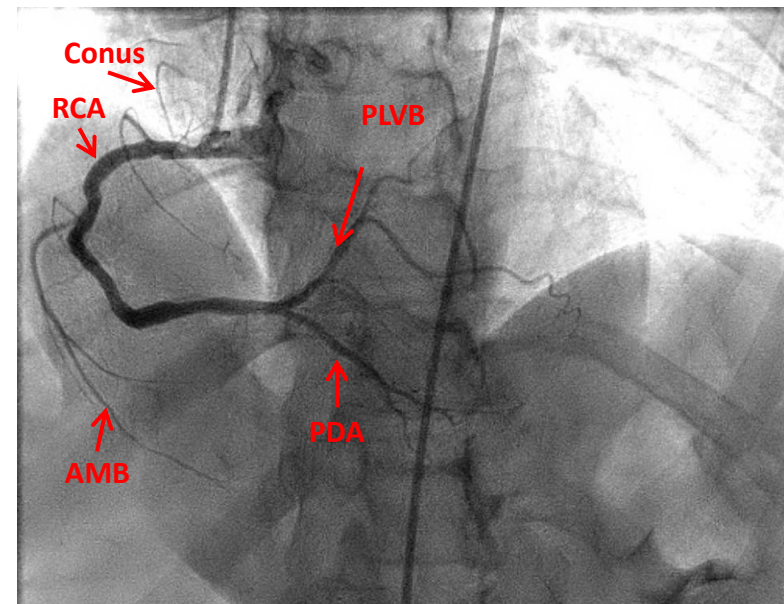


RCA: LAO Straight

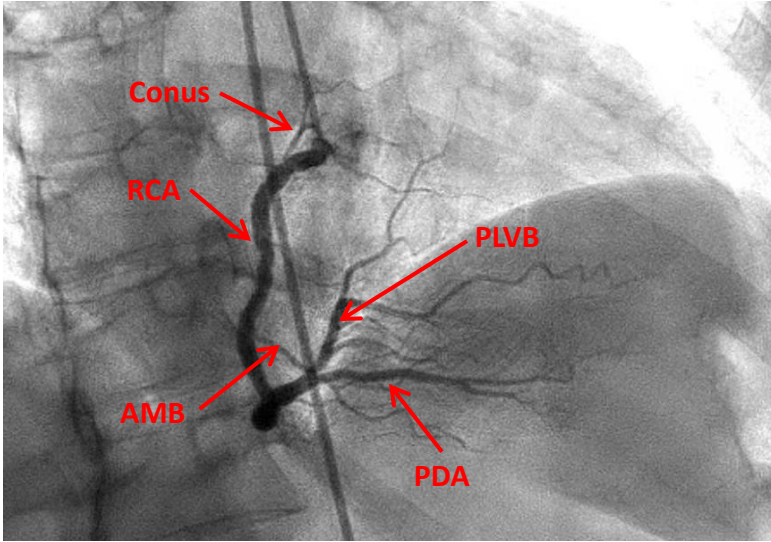
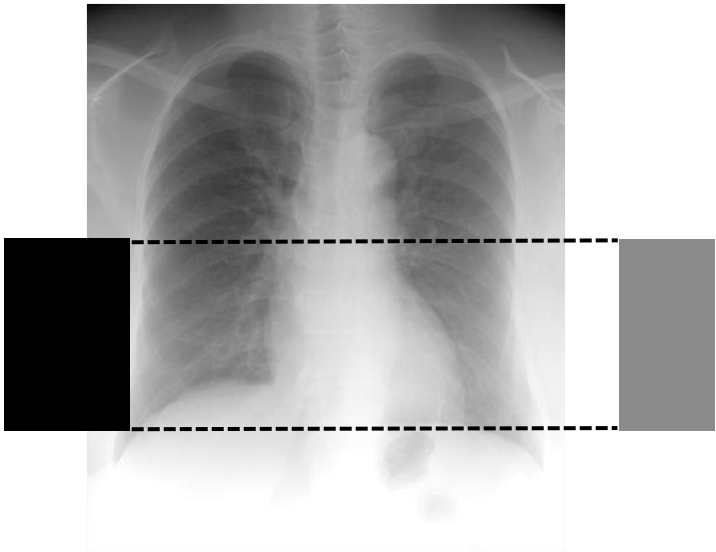
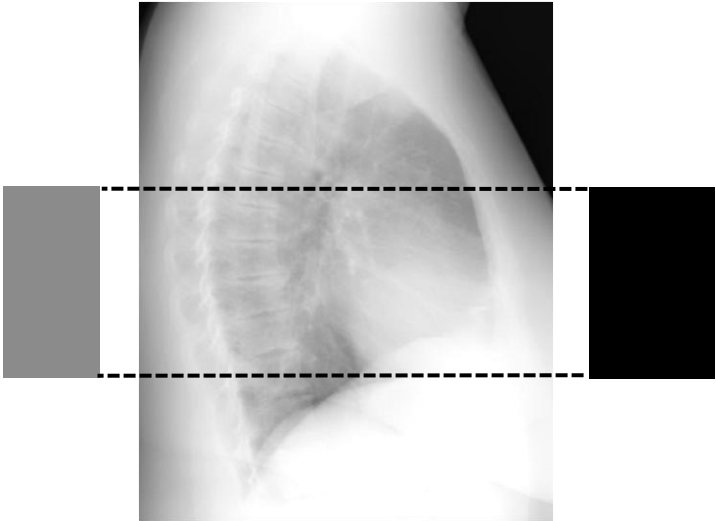


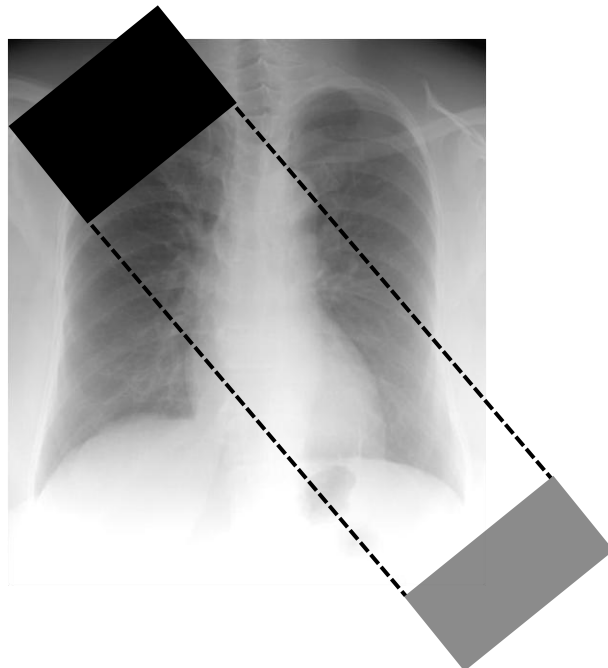
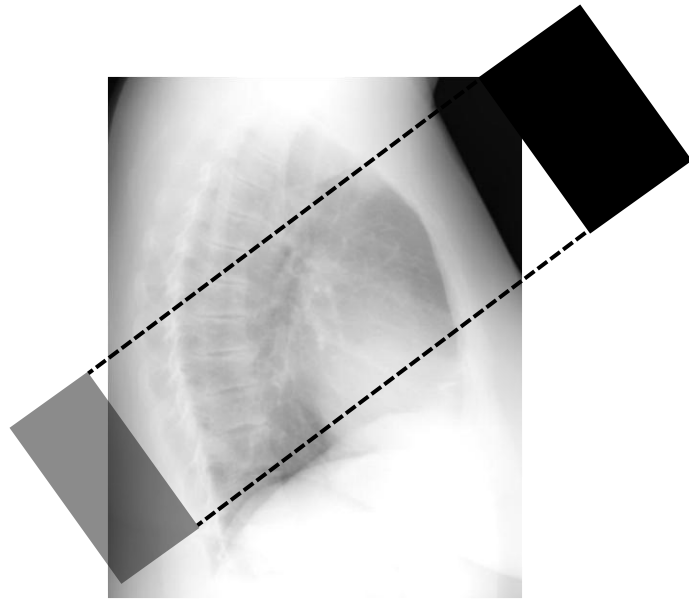


RCA: AP - LAO Cranial

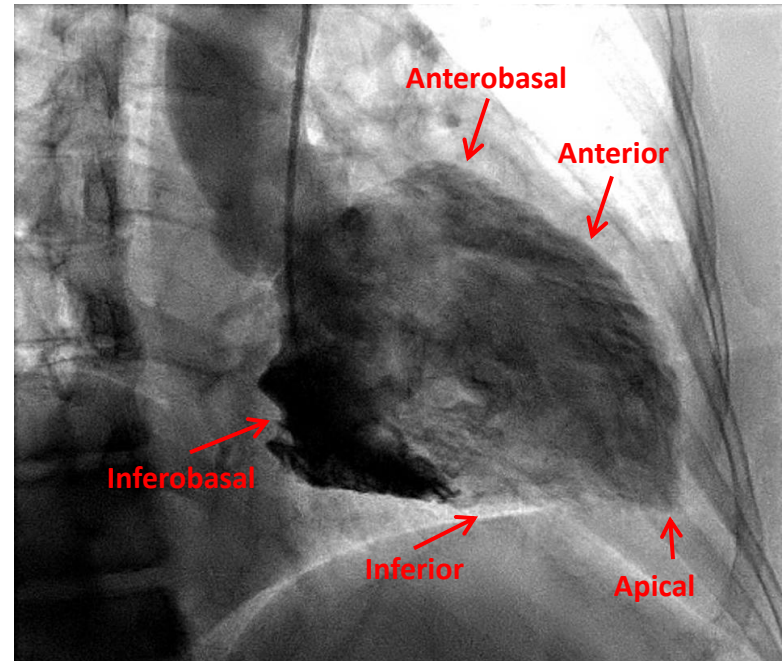


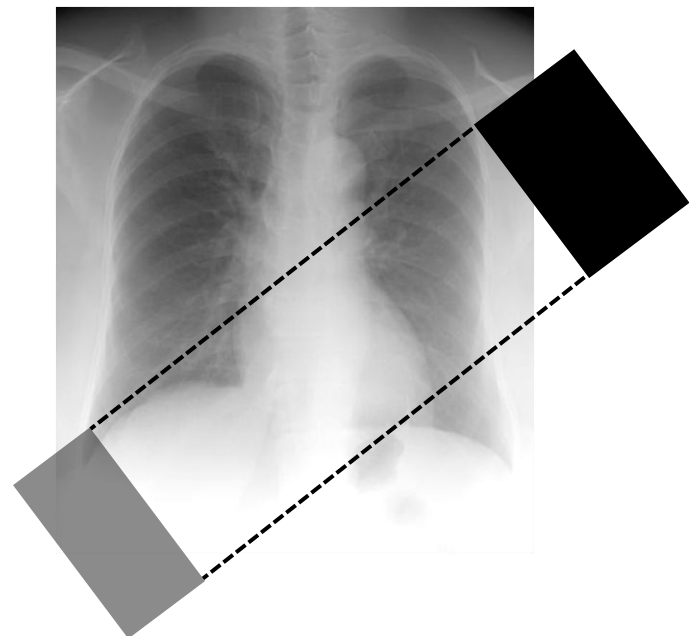
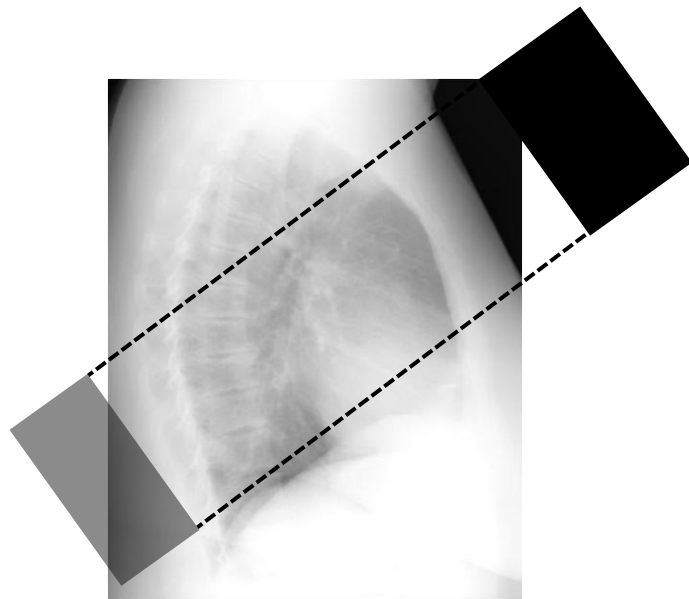
RCA: RAO Straight





LV Gram: RAO Cranial





LV Gram: LAO Cranial

