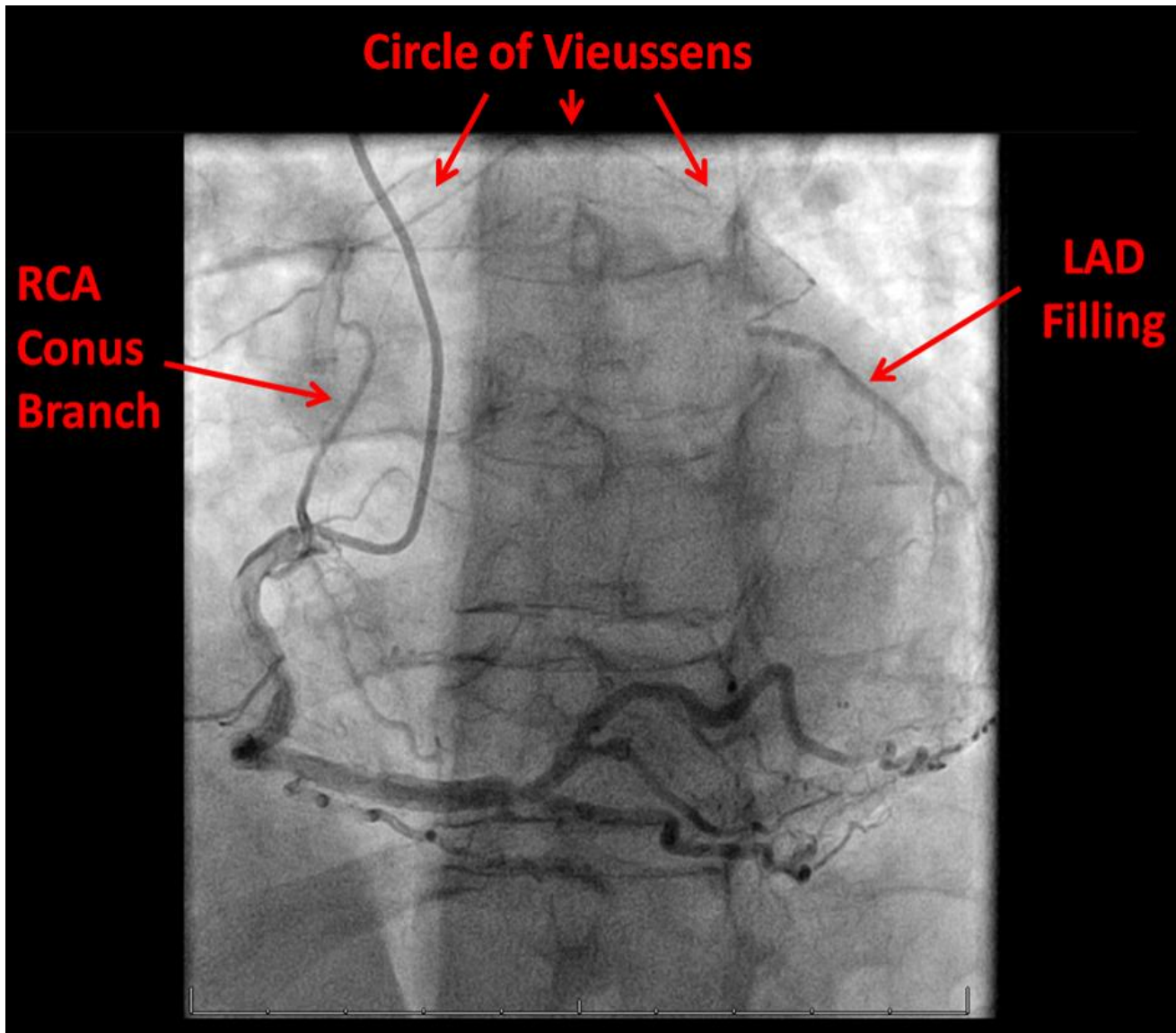


Circle of Vieussens: *Got Collaterals?*

Sarina Sachdev, M.D.^{a,b}, Landai Nguyen, D.O.^a, G. Mustafa Awan, M.D.^a, Bassam Omar, M.D., Ph.D.^a



Description

Circle of Vieussens [1] is an important coronary collateral pathway providing flow from the right coronary artery (RCA), via the conus artery, to the left anterior descending artery

(LAD). It is seen in 20% of patients with total occlusion of the LAD. It can occur from stenotic lesions in either RCA or LAD. It was first described in 1706 by the French anatomist Raymond de Vieussens [2]. Coronary collateral

circulation supply to totally occluded vessels plays a crucial role in the pathophysiology of coronary artery disease and is a strong predictor of symptoms and outcomes [3].

Manuscript submitted September 24, 2018, accepted September 24, 2018

a Division of Cardiology, University of South Alabama, Mobile, AL, USA

b Corresponding Author: Sarina Sachdev, Division of Cardiology, University of South Alabama, 2451 USA Medical Center Dr., Mobile, AL 36617, USA.

Email: ssachdev@health.southalabama.edu

<http://cardiofellows.com/newsletter-september-2018.html>

References

1. Deora S, Shah S, Patel T. "Arterial circle of Vieussens" - An important intercoronary collateral. *Int J Cardiol Heart Vessel*. 2014 Mar 6;3:84-85.
2. Heinemann MK. A vicious Vieussens' circle? *Thorac Cardiovasc Surg*. 2011 Oct;59(7):385.
3. Vo MN, Brilakis ES, Kass M, Ravandi A. Physiologic significance of coronary collaterals in chronic total occlusions. *Can J Physiol Pharmacol*. 2015 Oct;93(10):867-71.

KEYWORDS: Coronary Disease; Collateral Circulation; Coronary Angiography

Reference this article as:

Sachdev S, Nguyen L, Awan GM, Omar B. Circle of Vieussens: *Got Collaterals?* *Cardiofel Newslet* 2018 Sep; 1(3): 19-20.